

# **ABO** valve

## **BALL VALVES**

**DN8 - DN100  
PN63/PN40**



**Applications:**

Chemical industry  
Petrochemistry  
Water treatment  
Power plants  
Pulp & Paper industry  
Refineries  
Oil & Gas  
Shipbuilding  
Pharmacy  
Food & Beverages

# **SERIES ART.xxx**

[www.abovalve.com](http://www.abovalve.com)

# ART. 940

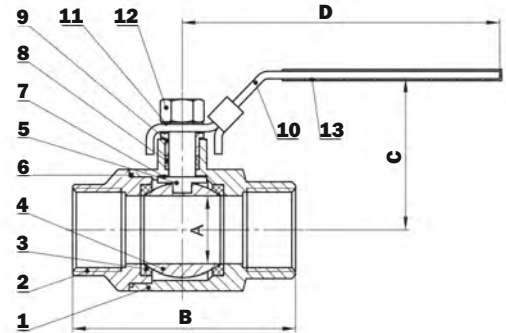
# ART. 941

Czech Industrial Valve Manufacturer

## ART. 940

Stainless steel ball valve

- 2-piece ball valve
- full bored body
- F.F. thread (BSPP / BSPT)
- DN 8-25: PN 63 / DN32-50: PN40
- thread end:
  - ANSI B 1.20.1 (NPT)
  - ISO 7/1 (Rc/Rp)
  - ISO 228/1 (G)



## OPERATING TORQUES

DN	8	10	15	20	25	32	40	50
Nm	1,76	1,76	2,65	8,04	9,51	13,24	17,16	21,27

Note: The torque figures were measured under 0 pressure at room temperature (without safety factor).

DN	A	B±2	C	D
8	10	50	41,4	80
10	12,5	50	41,4	80
15	15	60	45	80
20	20	70	54,7	100
25	24,5	80	65,3	125
32	32	93	70,9	125
40	38	103	84	160
50	50	123	93,3	160

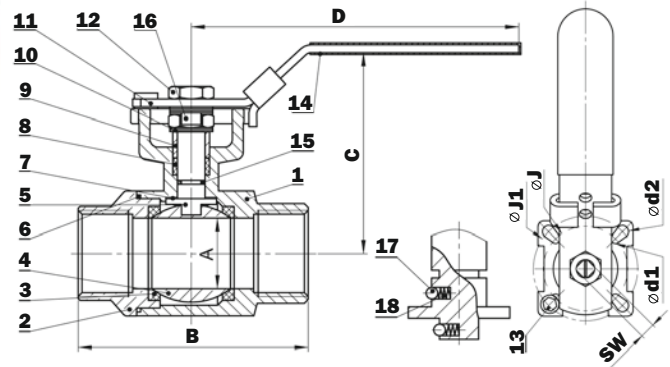
Note: Dimensions are mentioned in mm. Permissible deviations +/- 2 mm.

ITEM	PART NAME	MATERIAL	QUANTITY
		Art.940	
1	Body	EN10213 1,4408	1
2	End caps	EN10213 1,4408	1
3	Seat	PTFE + 15% G.F.	2
4	Ball	CF8M/316	1
5	Steam	SUS 316	1
6	Gasket	PTFE	1
7	Gasket	PTFE	1
8	Seal	PTFE	1
9	Packing gland	SUS 304	1
10	Handle	SUS 304	1
11	Lever spring washer	SUS 304	1
12	Lever nut	SUS 304	1
13	Plastic coating	PVC	1

## ART. 941

Stainless steel ball valve

- 2-pieces with ISO flanged connections
- full bored body
- F.F. thread (BSPP / BSPT)
- PN 63
- thread end:
  - ANSI B 1.20.1 (NPT)
  - ISO 7/1 (Rc/Rp)
  - ISO 228/1 (G)



## OPERATING TORQUES

DN	15	20	25	32	40	50
Nm	4,12	4,61	9,02	9,61	12,55	21,27

Note: The torque figures were measured under 0 pressure at room temperature (without safety factor).

DN	A	B	C	D	H	L	J	J1	d1	d2	SW
8	11,1	57	72,7	110	42,3	8	42	50	6	7	9
10	11,1	57	72,7	110	42,3	8	42	50	6	7	9
15	15	57	70,7	110	42,3	8	42	50	6	7	9
20	20	71	72,7	110	44,8	8	42	50	6	7	9
25	24,5	83	83,5	135	54	10	42	50	6	7	11
32	32	91	100	165	59,2	10	50	70	7	9	11
40	38	104	100,8	165	71,3	10	50	70	7	9	11
50	50	123	118	165	82,9	14,8	50	70	7	9	14

Note: Dimensions are mentioned in mm. Permissible deviations +/- 2 mm.

ITEM	PART NAME	MATERIAL	QUANTITY
		Art.941	
1	Body	EN10213 1,4408	1
2	End caps	EN10213 1,4408	1
3	Seats	PTFE + 15% G.F.	2
4	Ball	CF8M/316	1
5	Steam	SUS 316	1
6	Gasket	PTFE	1
7	Gasket	PTFE + 15% G.F.	1
8	Seal	PTFE	1
9	Gland ring	SUS 304	2
10	Belleville spring washer	SUS 301	2
11	Handle	SUS 304	1
12	Lever nut	SUS 304	2
13	Stop screw	SUS 304	1
14	Plastic coating	PVC	1
15	O-ring	VITON	1-2
16	Locking tab	SUS 304	1
17	Static device	SUS 316	2
18	Spring	SUS 316	2

# ART. 942

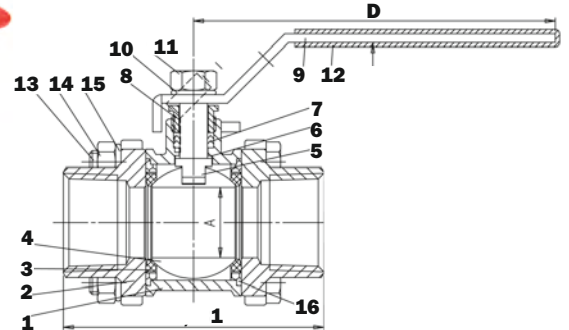
# ART. 943



## ART. 942

Stainless steel ball valve

- 3-piece ball valve
- full bored body
- F.F. thread (**BSPP** / BSPT)
- DN 8-25: PN 63 / DN32-50: PN40
- thread end:
  - ANSI B 1.20.1 (NPT)
  - ISO 7/1 (Rc/Rp)
  - ISO 228/1 (G)



### OPERATING TORQUES

DN	8	10	15	20	25	32	40	50
Nm	1,76	1,76	3,92	5,39	7,65	14,22	19,14	22,06

Note: The torque figures were measured under 0 pressure at room temperature (without safety factor).

DN	A	B±2	C	D	E	F	G	B1±2
8	10	50	41,4	80	10	13	14	70
10	12,5	60	41,4	80	12,5	13	18	70
15	15	75	45	80	16	17	22	75
20	20	80	54,7	100	20	22	27,5	90
25	24,5	90	65,3	125	24,5	28	34,5	100
32	32	110	70,9	125	32	37	43	110
40	38	120	84	160	38	43	49	125
50	50	140	93,3	160	50	54	61,5	150

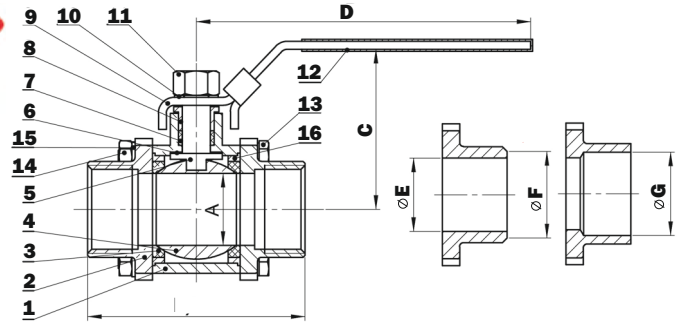
Note: Dimensions are mentioned in mm. Permissible deviations +/- 2 mm.

ITEM	PART NAME	MATERIAL	QUANTITY
		Art.942	
1	Body	EN10213 1,4408	1
2	End caps	EN10213 1,4408	2
3	Seat	PTFE + 15% G.F.	2
4	Ball	CF8M/316	1
5	Steam	SUS 316	1
6	Gasket	PTFE	1
7	Seal	PTFE	1
8	Packing gland	SUS 304	1
9	Handle	SUS 304	1
10	Lever spring washer	SUS 304	1
11	Lever nut	SUS 304	1
12	Plastic coating	VINYL	1
13	Bolts	SUS 304	4
14	Bolts nuts	SUS 304	4
15	Spring washer	SUS 304	4
16	Body seal	PTFE + 15% G.F.	2

## ART. 943

Stainless steel ball valve

- 2-pieces type
- full bored body
- welded pipe connection
- DN 8-25: PN 63
- DN32-50: PN40
- welded end:
  - EN 12627



### OPERATING TORQUES

DN	8	10	15	20	25	32	40	50
Nm	1,76	1,76	3,92	5,39	7,65	14,22	19,14	22,06

Note: The torque figures were measured under 0 pressure at room temperature (without safety factor).

DN	A	B±2	C	D	E	F	G	B1±2
8	10	50	41,4	80	10	13	14	70
10	12,5	70	41,4	80	12,5	13	18	70
15	15	75	45	80	16	17	22	75
20	20	90	54,7	100	20	22	27,5	90
25	24,5	100	65,3	125	24,5	28	34,5	100
32	32	110	70,9	125	32	37	43	110
40	38	125	84	160	38	43	49	125
50	50	150	93,3	160	50	54	61,5	150

Note: Dimensions are mentioned in mm. Permissible deviations +/- 2 mm.

ITEM	PART NAME	MATERIAL	QUANTITY
		Art.943	
1	Body	EN10213 1,4408	1
2	End caps	EN10213 1,4408	2
3	Seat	PTFE + 15% G.F.	2
4	Ball	CF8M/316	1
5	Steam	SUS 316	1
6	Gasket	PTFE	1
7	Seal	PTFE	1
8	Packing gland	SUS 304	1
9	Handle	SUS 304	1
10	Lever spring washer	SUS 304	1
11	Lever nut	SUS 304	1
12	Plastic coating	VINYL	1
13	Bolts	SUS 304	4
14	Bolts nuts	SUS 304	4
15	Spring washer	SUS 304	4
16	Body seal	PTFE + 15% G.F.	2



# ART. 944

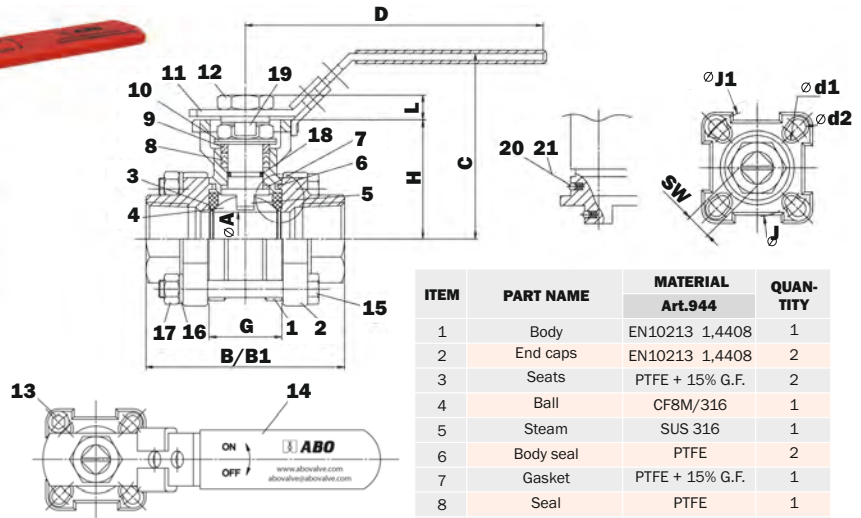
# ART. 945

Czech Industrial Valve Manufacturer

## ART. 944

Stainless steel ball valve

- 2-pieces with ISO flanged connection
- full bored body
- F.F. thread (**BSPP** / BSPT)
- PN63
- thread end:  
ANSI B 1.20.1 (NPT)  
ISO 7/1 (Rc/Rp)  
ISO 228/1 (G)



## OPERATING TORQUES

DN	15	20	25	32	40	50
Nm	3,73	5,10	6,57	9,61	16,47	32,16

Note: The torque figures were measured under 0 pressure at room temperature (without safety factor).

DN	A	B	B1	C	D	E	F	F1	G	J	J1	SW	d1	d2	H	L
8	11,1	75	75	70,9	110	14,2	13	17,2	25,2	36	42	9	6	6	42,3	8
10	11,1	75	75	70,9	110	17,7	13	17,2	25,2	36	42	9	6	6	42,3	8
15	16	75	75	70,9	110	21,9	17	22,4	25,2	36	42	9	6	6	42,3	8
20	20	90	90	73,4	110	27,2	22	28,2	27,7	36	42	9	6	6	44,8	8
25	24,5	100	100	84,1	135	34	28	33,7	33	42	50	11	6	7	54	10
32	32	110	110	89,3	135	42,7	37	44	41,2	42	50	11	6	7	59,2	10
40	38	120	125	109,5	165	48,8	43	50,8	49,3	50	70	14	7	9	73,5	14,8
50	50	140	150	118,9	165	61,3	54	62,6	63,6	50	70	14	7	9	82,9	14,8

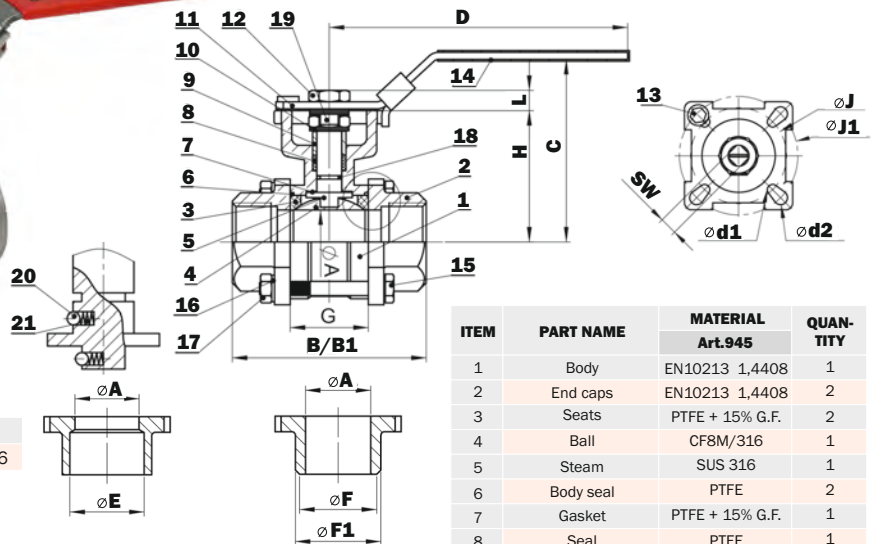
Note: Dimensions are mentioned in mm. Permissible deviations +/- 2 mm.

ITEM	PART NAME	MATERIAL	QUANTITY
		Art.944	
1	Body	EN10213 1,4408	1
2	End caps	EN10213 1,4408	2
3	Seats	PTFE + 15% G.F.	2
4	Ball	CF8M/316	1
5	Steam	SUS 316	1
6	Body seal	PTFE	2
7	Gasket	PTFE + 15% G.F.	1
8	Seal	PTFE	1
9	Gland ring	SUS 304	2
10	Belleville spring washer	SUS 301	2
11	Handle	SUS 304	1
12	Lever nut	SUS 304	1
13	Stop screw	SUS 304	1
14	Plastic coating	PVC	1
15	Bolts	SUS 304	4
16	Spring washer	SUS 304	4
17	O-ring	SUS 304	4
18	Locking tab	VITON	1-2
19	Static device	SUS 304	1
20	Static device	SUS 316	2
21	Spring	SUS 316	2

## ART. 945

Stainless steel ball valve

- 3-pieces type with ISO flanged connections
- full bored body
- welded pipe connection
- PN 63
- welded end:  
EN 12627



## OPERATING TORQUES

DN	15	20	25	32	40	50
Nm	3,73	5,10	6,57	9,61	16,47	32,16

Note: The torque figures were measured under 0 pressure at room temperature (without safety factor).

DN	A	B	B1	C	D	E	F	F1	G	J	J1	SW	d1	d2	H	L
8	11,1	75	75	70,9	110	14,2	13	17,2	25,2	36	42	9	6	6	42	8
10	11,1	75	75	70,9	110	17,7	13	17,2	25,2	36	42	9	6	6	42	8
15	16	75	75	70,9	110	21,9	17	22,4	25,2	36	42	9	6	6	42	8
20	20	80	90	73,4	110	27,2	22	28,2	27,7	36	42	9	6	6	45	8
25	24,5	90	100	84,1	135	34	28	33,7	33	42	50	11	6	7	54	10
32	32	110	110	89,3	135	42,7	37	44	41,2	42	50	11	6	7	59	10
40	38	120	125	110	165	48,8	43	50,8	49,3	50	70	14	7	9	74	15
50	50	140	150	119	165	61,3	54	62,6	63,6	50	70	14	7	9	83	15

Note: Dimensions are mentioned in mm. Permissible deviations +/- 2 mm.

ITEM	PART NAME	MATERIAL	QUANTITY
		Art.945	
1	Body	EN10213 1,4408	1
2	End caps	EN10213 1,4408	2
3	Seats	PTFE + 15% G.F.	2
4	Ball	CF8M/316	1
5	Steam	SUS 316	1
6	Body seal	PTFE	2
7	Gasket	PTFE + 15% G.F.	1
8	Seal	PTFE	1
9	Gland ring	SUS 304	2
10	Belleville spring washer	SUS 301	2
11	Handle	SUS 304	1
12	Lever nut	SUS 304	1
13	Stop screw	SUS 304	1
14	Plastic coating	PVC	1
15	Bolts	SUS 304	4
16	Spring washer	SUS 304	4
17	Bolts nuts	SUS 304	4
18	O-ring	VITON	1-2
19	Locking tab	SUS 304	1
20	Static device	SUS 316	2
21	Spring	SUS 316	2

# ART. 946

# ART. 947

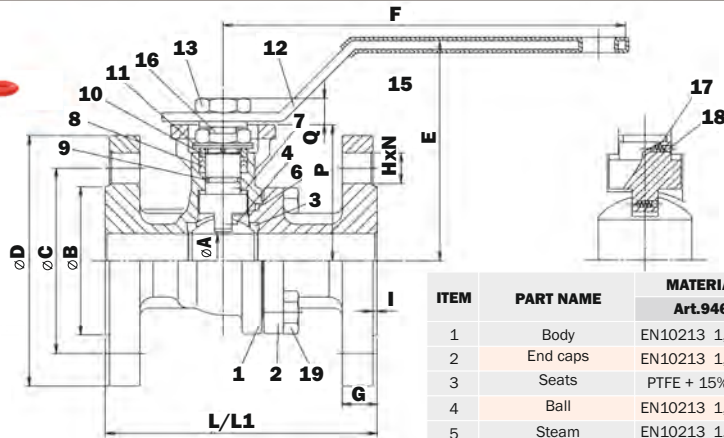


## ART. 946

Stainless steel ball valve

- 2-pieces type with ISO flanged connection
- PN40
- flange connection: EN 1092\*

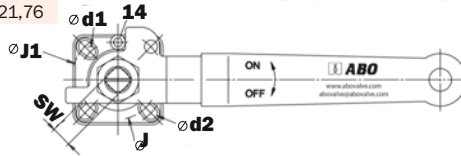
\*(ANSI / ASME B16.5 upon request)



## OPERATING TORQUES

DN	15	20	25	32	40	50
Nm	4,12	4,22	6,37	12,55	16,37	21,76

Note: The torque figures were measured under 0 pressure at room temperature (without safety factor).



DN	A	B	C	D	E	F	G	HxN	L	L1	I	P	Q	J	J1	d1	d2	SW
15	16	45	65	95	89	114	16	14x4	115	130	2	54	8	36	42	6	6	9
20	20	58	75	105	89	114	18	14x4	120	150	2	56	8	36	42	6	6	9
25	25	68	85	115	101	187	18	14x4	125	160	2	62,5	12	42	50	6	7	11
32	32	78	100	140	112	187	18	18x4	130	180	2	72	12	42	50	6	7	11
40	40	88	110	150	116	222	18	18x4	140	200	3	78	14,8	50	70	7	9	14
50	50	102	125	165	125	222	20	18x4	150	230	3	87,2	14,8	50	70	7	9	14

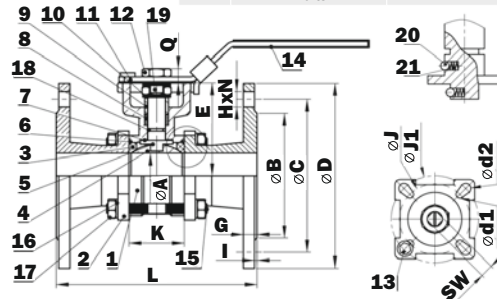
Note: Dimensions are mentioned in mm. Permissible deviations +/- 2 mm.

## ART. 947

Stainless steel ball valve

- 3-pieces type with ISO flanged connections
- PN40
- flange connection: EN 1092\*

\*(ANSI / ASME B16.5 upon request)



## OPERATING TORQUES

DN	15	20	25	32	40	50	65	80	100
Nm	3,73	5,10	6,57	9,61	16,47	32,16	61,76	78,43	132,35

Note: The torque figures were measured under 0 pressure at room temperature (without safety factor).

DN	A	B			C			D			SW	d1	d2	Q
		ANSI	PN16	PN40	ANSI	PN16	PN40	ANSI	PN16	PN40				
15	16	35	45	45	66,5	65	65	95	95	95	9	6	6	8
20	20	43	58	58	82,5	75	75	117	105	105	9	6	6	8
25	24,5	51	68	68	89	85	85	124	115	115	11	6	7	12
32	32	64	78	78	98,5	100	100	133	140	140	11	6	7	12
40	38	73	88	88	114,3	110	110	155	150	150	14	7	9	14,3
50	50	92	102	102	127	125	125	165	165	165	14	7	9	14,3
65	65	105	122	122	149,3	145	145	190	185	185	17	9	11	17,1
80	80	127	138	138	168	160	160	209	200	200	17	9	11	17,1
100	100	157	158	160	200	180	190	254	220	235	17	9	11	17,1

DN	E	G		I	H x N			K	L		J	J1	
		ANSI	PN16		ANSI	PN16	PN40		ANSI	DIN			
15	42,3	14,2	14	1,6	2	16x4	14x4	14x4	25,2	139,7	130	36	42
20	44,8	15,7	16	1,6	2	19x4	14x4	14x4	27,2	152,4	150	36	42
25	54	17,5	16	1,6	2	19x4	14x4	14x4	33	165,1	160	42	50
32	59,2	19	16	1,6	2	19x4	18x4	18x4	41,2	177,8	180	42	50
40	73,5	20,5	16	1,6	3	22x4	18x4	18x4	49,3	190,5	200	50	70
50	82,9	22,5	18	2,0	3	19x8	18x4	18x4	63,6	215,9	230	50	70
65	107	25,4	18	2,2	3	22x8	18x4	18x8	82,1	241,3	290	70	102
80	117	28,4	20	2,4	3	22x8	18x8	18x8	95,8	282,4	310	70	102
100	132	31,8	20	2,4	3	22x8	18x8	18x8	117,8	304,8	350	70	102

Note: Dimensions are mentioned in mm. Permissible deviations +/- 2 mm.

ITEM	PART NAME	MATERIAL	QUANTITY
		Art.946	
1	Body	EN10213 1,4408	1
2	End caps	EN10213 1,4408	1
3	Seats	PTFE + 15% G.F.	2
4	Ball	EN10213 1,4408	1
5	Steam	EN10213 1,4408	1
6	Body seal	PTFE / GRAPHITE	1
7	Gasket	PTFE + 15% G.F.	1
8	Seal	PTFE / GRAPHITE	1
9	O-ring	VITON	1-2
10	Gland ring	SUS 304	2
11	Belleville spring washer	SUS 301	2
12	Handle	SUS 304	1
13	Lever nut	SUS 304	2
14	Stop screw	SUS 304	1
15	Plastic coating	VINYL	1
16	Locking tab	SUS 304	1
17	Spring	SUS 316	1
18	Static device	SUS 316	1
19	Bolts	A2-10	4-6

ITEM	PART NAME	MATERIAL	QUANTITY
		Art.947	
1	Body	EN10213 1,4408	1
2	End caps	EN10213 1,4408	2
3	Seats	PTFE + 15% G.F.	2
4	Ball	CF8M/316	1
5	Steam	SUS 316	1
6	Body seal	PTFE	2
7	Gasket	PTFE + 15% G.F.	1
8	Seal	PTFE	1
9	Gland ring	SUS 304	2
10	Belleville spring washer	SUS 301	2
11	Handle	SUS 304	1
12	Lever nut	SUS 304	1
13	Stop screw	SUS 304	1
14	Plastic coating	PVC	1
15	Bolts	SUS 304	4/6
16	Spring washer	SUS 304	8/12
17	Bolts nuts	SUS 304	8/12
18	O-ring	VITON	1/2
19	Locking tab	SUS 304	1
20	Static device	SUS 316	2
21	Spring	SUS 316	2

# CONTACT US

Czech Industrial Valve Manufacturer



## Czech Republic

**ABO valve, s.r.o.**  
Dalimilova 285/54  
783 35 Olomouc  
tel.: +420 585 224 087  
sales@abovalve.com

## Slovak Republic

**ABO Slovakia, s.r.o.**  
Banská Bystrica  
tel.: +421 947 902 862  
sales.sk@abovalve.com

## Germany

**ABO Armaturen GmbH**  
Essen  
tel.: +49 (0)152 262 29501  
sales.de@abovalve.com

## Russia

**ABO Armatura LLC**  
Smolensk  
tel.: +7 (4812) 240 020  
sales.ru@abovalve.com

## Ukraine

**ABO Ukraine LLC**  
Dnipro  
tel.: +38 056 733 95 70  
sales.ua@abovalve.com

## Turkey

**ABO Armaturen LTD STI**  
Istanbul  
tel.: +90 216 527 36 34  
sales.tr@abovalve.com

## China

**ABO Flow Control**  
Shanghai  
tel.: +86 136 01 522 831  
sales.cn@abovalve.com

## India

**ABO Controls Pvt. Ltd.**  
Mumbai  
tel.: +91 773 820 4779  
sales.in@abovalve.com

## Singapore

**ABO Valve Pte. Ltd.**  
Singapore  
tel.: +65 9169 4562  
sales.sg@abovalve.com

## USA

**ABO Controls LLC**  
Houston  
tel.: +(1) 832.291.4929  
sales.us@abovalve.com

## United Arab Emirates

**Sales representation**  
Abu Dhabi  
tel.: +971 56 9207964  
bharti@abovalve.com

## Bahrain

**Sales representation**  
Manama  
tel.: +973 3444 9065  
jimrichen@abovalve.com

Valid since: 01/2022



Follow us on:



[www.abovalve.com](http://www.abovalve.com)



The technical information described in this leaflet is tentative and for general use only and does not constitute a recommendation or guarantee for any specific service or application requirement. Please consult ABO representative or factory for specific requirements and material selection for your intended application. The right to change or modify product design or product without prior notice is reserved. ABO valve accepts no liability for damages caused by bad interpretation or use of the information included in this brochure.