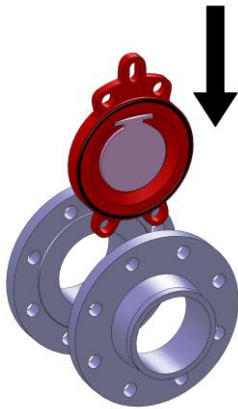
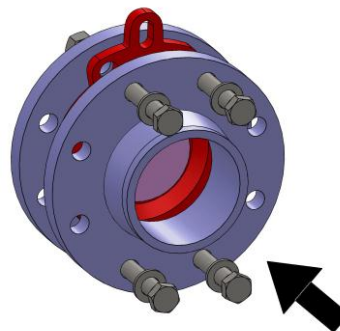




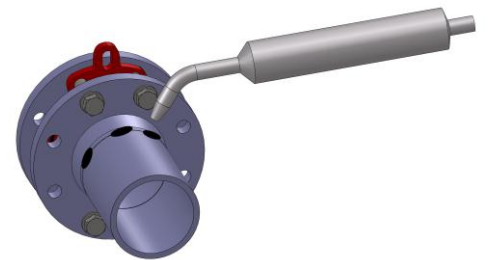
Instructions for the installation Swing-check valves - Series 800F



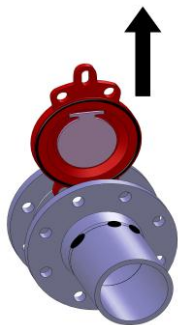
1. Place the valve between the flanges with sufficient distance between them.



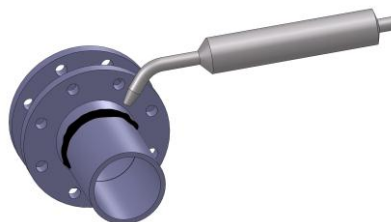
2. Tighten the flanges lightly with four bolts and align the position of the valve.



3. Attach the flanges at several points to the piping using a welding electrode.



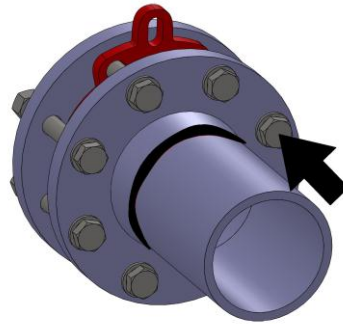
4. Remove the valve.



5. Weld the flanges to the piping.



6. After the flanges have cooled down, insert the valve, and ensure sufficient clearance (see Fig. 1). The arrow on the body must coincide with the flow direction.



7. Centre the valve and tighten it lightly using four bolts. Add the remaining bolts (tighten them in a “criss-cross pattern”).

These instructions as well as other information – also in other languages – are available at www.abovalve.com or upon request at:

ABO valve, s.r.o.
Dalimilova 54b
783 35 Olomouc - Chomoutov
Czech Republic

Tel. 00420 585 223 955
Fax 00420 585 223 984
abovalve@abovalve.com
www.abovalve.com

Last revision: 27 January 2011