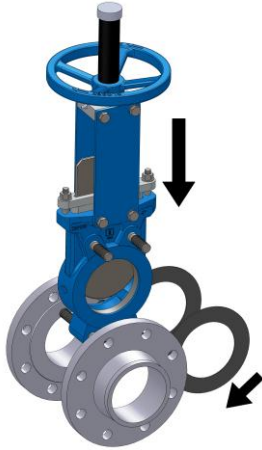
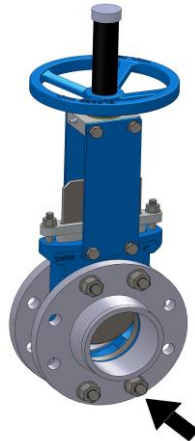




# Instructions for the installation Knife gate valves - series ABO 200, 300



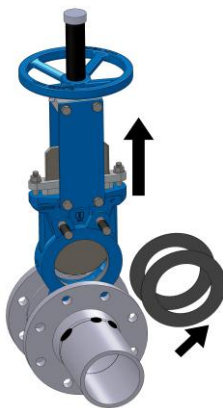
1. Position the gate valve with screw studs together with gaskets between the flanges.



2. Move the flanges to the screw studs and tighten lightly with four nuts.



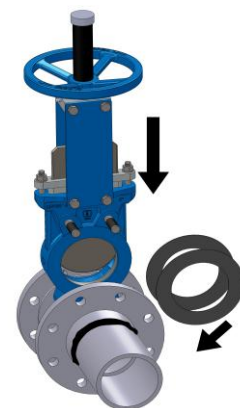
3. Attach the flanges at several points to the piping using a welding electrode.



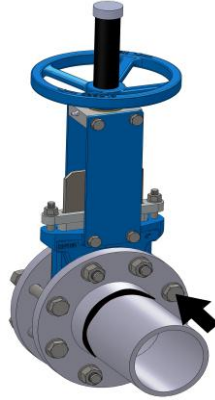
4. Remove the valve.



5. Weld the flanges to the piping.



6. When the flanges have cooled down, insert the gate valve again with gaskets. The arrow on the body must coincide with the flow direction.



7. Position the gate valve, add the remaining bolts and nuts and tighten them (in a “criss-cross pattern”).

These instructions as well as other information – also in other languages – are available at [www.abovalve.com](http://www.abovalve.com) or upon request at:

ABO valve, s.r.o.  
Dalimilova 54b  
783 35 Olomouc - Chomoutov  
Czech Republic

Tel. 00420 585 223 955  
Fax 00420 585 223 984  
[abovalve@abovalve.com](mailto:abovalve@abovalve.com)  
[www.abovalve.com](http://www.abovalve.com)

Last revision: 27 January 2011