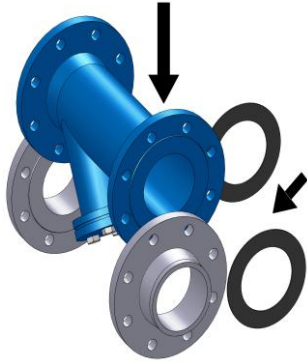
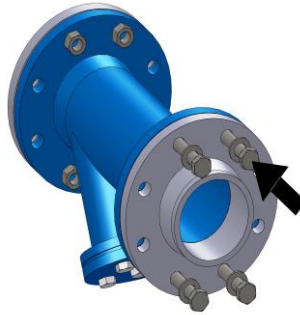




Instructions for the installation Flange filters



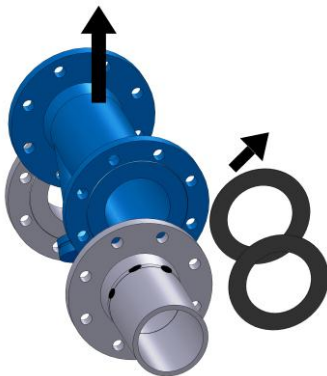
1. Position the filter with gaskets between the flanges.



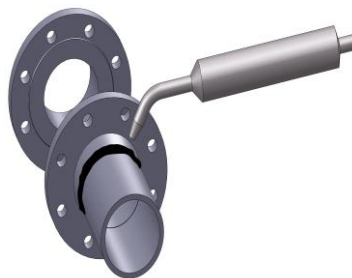
2. Tighten the flanges lightly with four bolts and align the position.



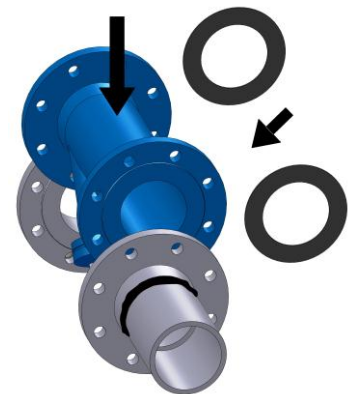
3. Attach the flanges at several points to the piping using a welding electrode.



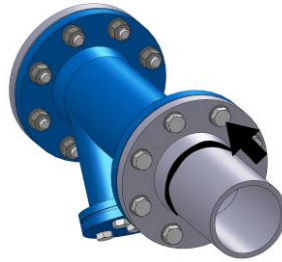
4. Remove the filter.



5. Weld the flanges to the piping.



6. When the flanges have cooled down, insert the filter again with gaskets. The arrow on the body must coincide with the flow direction.



7. Position the filter, add the remaining bolts and nuts and tighten them (in a “criss-cross pattern”).

These instructions as well as other information – also in other languages – are available at www.abovalve.com or upon request at:

ABO valve, s.r.o.
Dalimilova 54b
783 35 Olomouc - Chomoutov
Czech Republic

Tel. 00420 585 223 955
Fax 00420 585 223 984
abovalve@abovalve.com
www.abovalve.com

Last revision: 27 January 2011